

Leolux LX

Company Profile

leolux LX

05/02/2019

1934



Zuid-Nederlandse
Clubmeubelfabriek
(ZNC)

1948



Ton Sanders
and
Jan Sanders

1973



Jeroen Sanders
and
Johan van Beek

2012



Sebastiaan Sanders
and
Patrick Schreudering

?



...Noor Sanders?

Leolux is a dynamic family business that manufactures contemporary furniture for a global clientele. All products are made to order in Venlo since 1934. The brand name Leolux was born in the 50s. Leolux originates from the “Zuid-Nederlandse Clubmeubelfabriek”. The proud lion in the ZNC-logo became the luxurious lion “Leolux”.

Customized design

- All our furniture is manufactured to order.
- Delivery time of 6-8 weeks.
- Collection of 72 different models in more than 500 versions.
- More than 30 billion (!) options.



Mission

With its high-quality contemporary furniture, Leolux helps create a more beautiful living and working environment. Inventive and optimally combining high-tech and craftsmanship, we fulfil the wishes of people who like comfort, quality and unusual design.



Leolux Core Values

Entrepreneurial

The people at Leolux are open minded, who always want to be ahead: with pioneering production and sales techniques, which enable us to renew the brand and strengthen the collection.

Responsible

As a family business, we look ahead, to the future. We recognize our responsibilities to colleagues, customers and suppliers, to our environment and to following generations. Because we are not alone on this planet. That's why we also want to play a role in the world. Our products are long-lasting and we choose sustainable solutions in our production process, in our sourcing of raw materials and our use of (green) energy.

Passionate

At Leolux, we work with passion. We are committed to the unique products we make and enthusiastically communicate the Leolux story. Wherever we see potential for improvement, we take action. We thus create unique products and services at Leolux which derive their added value from the passion we put into working on a better living environment.

Leolux LX | Company Profile

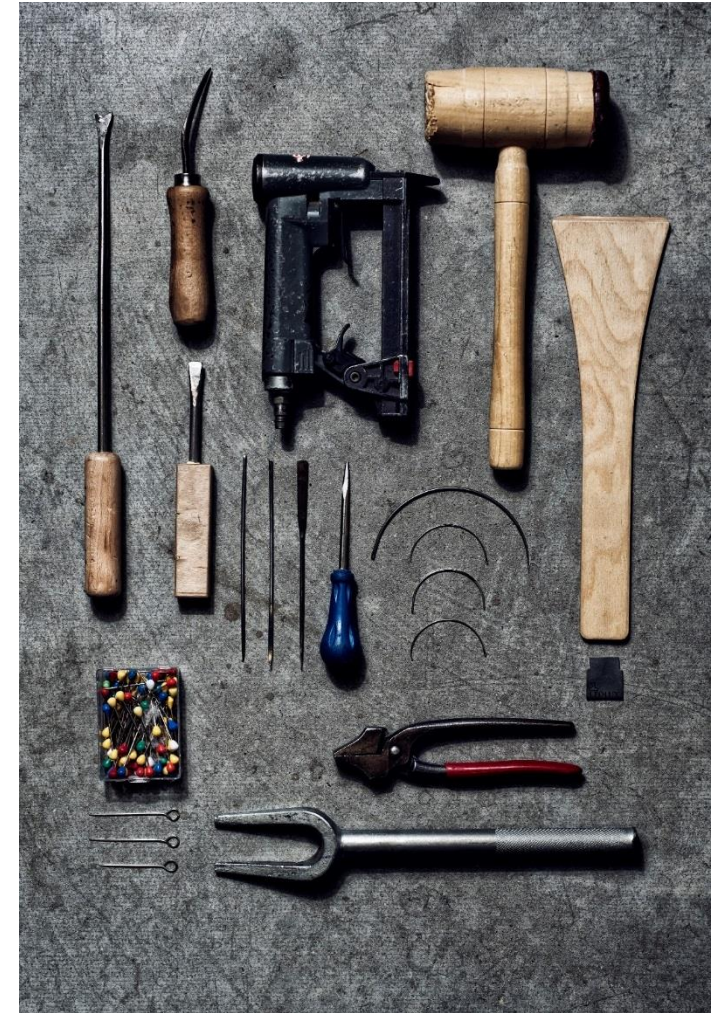
Craftsmanship

We recognize our talents and apply them to our task at Leolux. So everyone uses their own expertise to contribute to the company's success, be that in making furniture, establishing contact with people or ensuring that the organization runs smoothly. Together we guarantee a high-quality product that's reliable – before, during and after purchase.

Personal

We believe in a personal approach and sincere attention. Whether it be our customers, employees, partners or suppliers. We create tailor-made products.

leolux LX



International freelance designers

Andreas Berlin

Axel Enthoven

Braun Maniatis

Kirn Design

Christian Werner

Cuno Frommherz

Edward van Vliet

Frans Schrofer

Gabrielle Assmann

Gerard Vollenbrock

Hugo de Ruiter

Jan Armgardt

Jane Worthington

Müller & Wulff

Norbert Beck

Ontwerpduo

Patrick Belli

Riccardo Belli

Roy de Scheemaker

Stefan Heiliger

Thijs Smeets

Frans Schrofer

Edward van Vliet



Design Award Winners

leolux LX

Design awards are granted for the interplay of creativity and craftsmanship between the designer and Leolux.

They encourage us to continuously keep searching for innovative ideas.

Leolux Awards Winners

2016: LX673	2010: Piatra
2015: Caruzzo	2009: Parabolica
2014: Gynko	2009: Ponton
2013: Bolea	2007: Bflat
2011: Arabella	2004: Hemingway
2011: Mundo	1999: Volare
2011: LX965	1999: Sjamaan
2010: Spring	1989: LX901



Red Dot Design Award International product design prize, by the Design Zentrum Nordrhein Westfalen, Germany.



Good Industrial Design (GIO) Initiative of the independent foundation Designlink, supported by professional and trade associations and knowledge and educational institutions.



Interior Innovation Award One of the most prestigious design awards worldwide in the interior design industry. Initiated by imm cologne and hosted by the German Design Council.



Good Design Awards Industrial design program for products that enrich society and people's lives through its design, by Chicago Athenaeum Museum of Architecture and Design.



Swiss Design Award Prestigious award for innovation-fueled design and design-fueled innovation, by Design Center Langenthal, Switzerland. Presenting design as a factor of market success.

Verband Der Deutsch Polstermöbelindustrie



Verbände der
Holz- und Möbelindustrie
Nordrhein-Westfalen e. V.

**Leolux is member of the German
Association of Upholstery
Manufacturers.**

Bernd Schellenberg (sales & marketing
director LEOLUX GMBH is member of
the advisory board).

Leolux LX | Company Profile

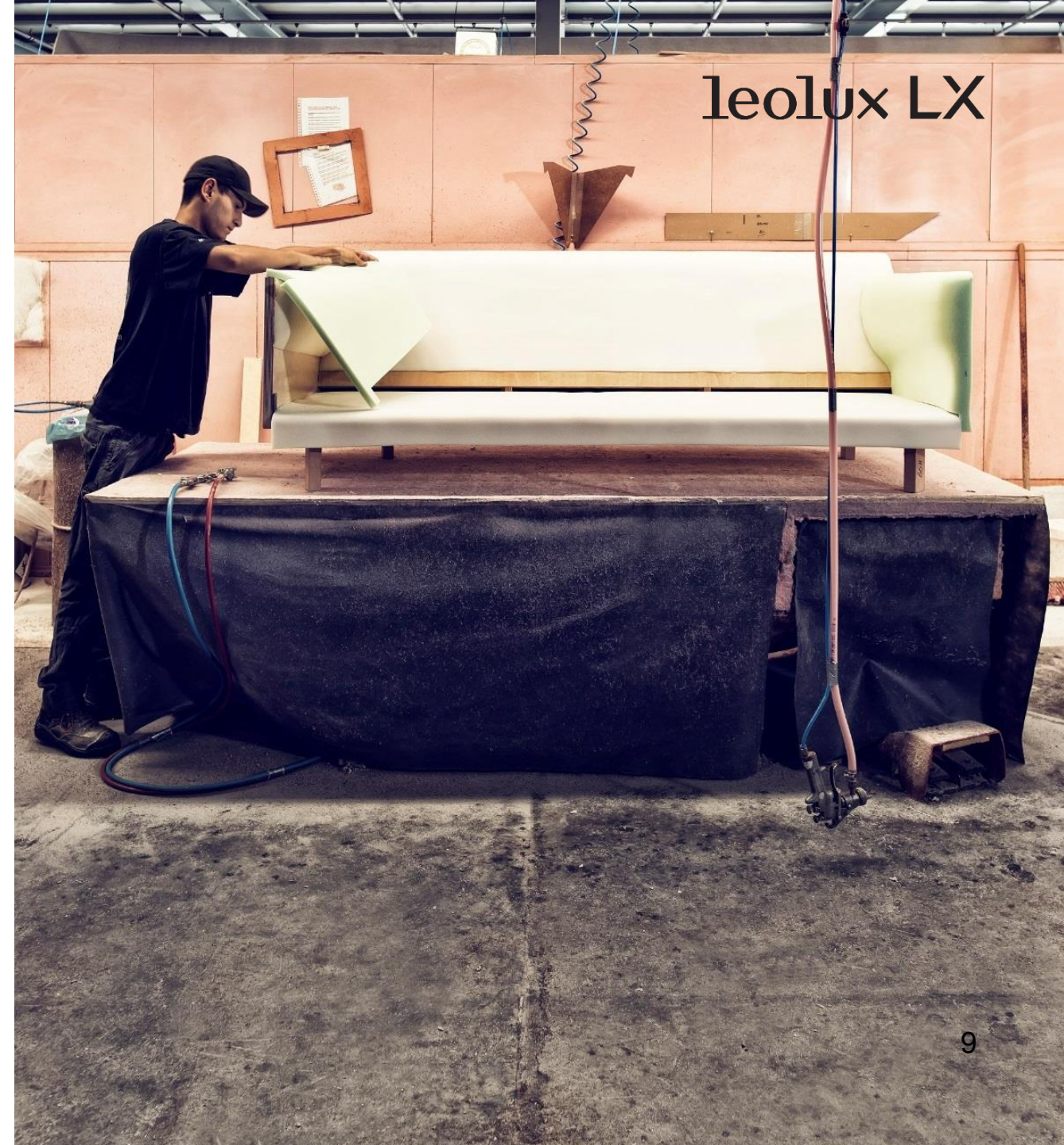


leolux LX

Leolux high quality foam

The comfort and design of our furniture are largely determined by its foam. For every piece of furniture we carefully determine the ideal combination of high quality foams.

For an ultimate comfort, we seek the perfect balance with hard steel springs, gas springs and elastic belts.



Solid Leolux frames

Our frames are always prepared with the utmost care.

We use solid beech wood in order to make the strong constructions and combine it with high quality plate materials. We connect the parts with properly bonded pin connections, finished with glue. As a result, our frames are indestructible and free of cracking.

All our wood is sustainably produced and the beech wood we use for our constructions is 100% PEFC certified. For an efficient use and minimal waste, our advanced milling machine saws to 1/1000th mm accuracy.



Leolux quality control

Each new leather and fabric quality is extensively tested before we add it to the Leolux collection. Only when all the tests are passed, we provide the new upholstery quality for our design furniture.

Of course, we also check each hide and every roll of fabric before we even start cutting these expensive materials.

Whatever choice is made, the Leolux experts always guarantee the finest leathers and fabrics. Hence the 2-year warranty on our furniture.



leolux LX

Leolux contract

Reference – custom made museum project
Limburgs Museum, Venlo (NL)

Leolux Contract

Leolux offers a wide range of products in which we are able to support a wide range of projects.

Our products, knowledge and reference cases are focused on four different segments:

- Lounge
- Conference
- Hospitality
- Residential



Collection

leolux LX

Reference – custom made museum project
Limburgs Museum, Venlo (NL)



The Leolux LX collection includes

leolux LX

Modular systems



The Leolux LX collection includes

leolux LX

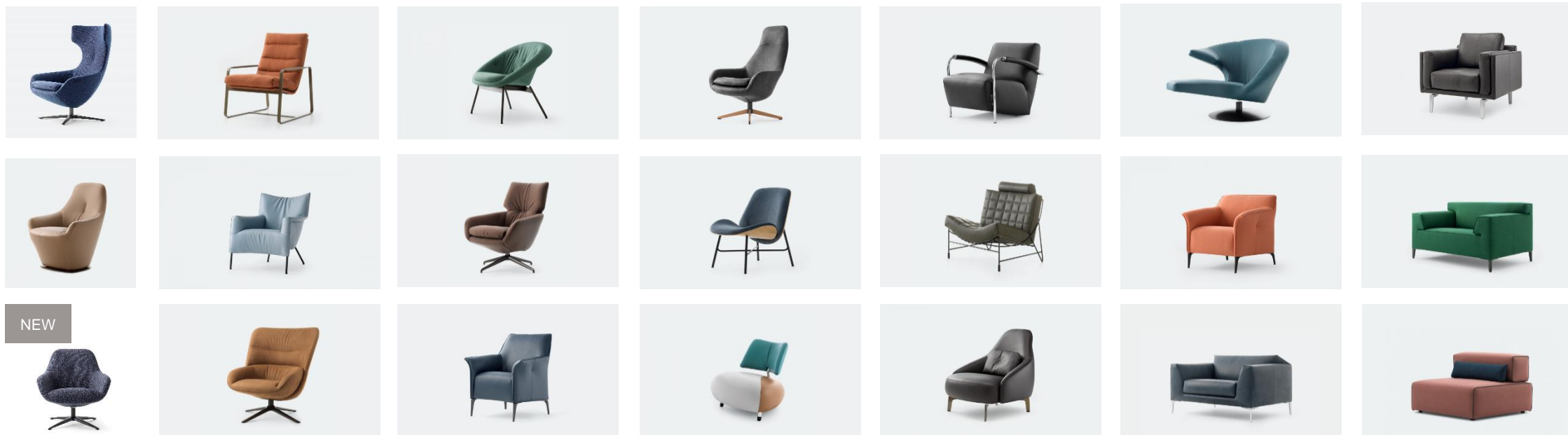
Sofas



The Leolux LX collection includes

leolux LX

Armchairs



The Leolux LX collection includes

leolux LX

Chairs



NEW



NEW



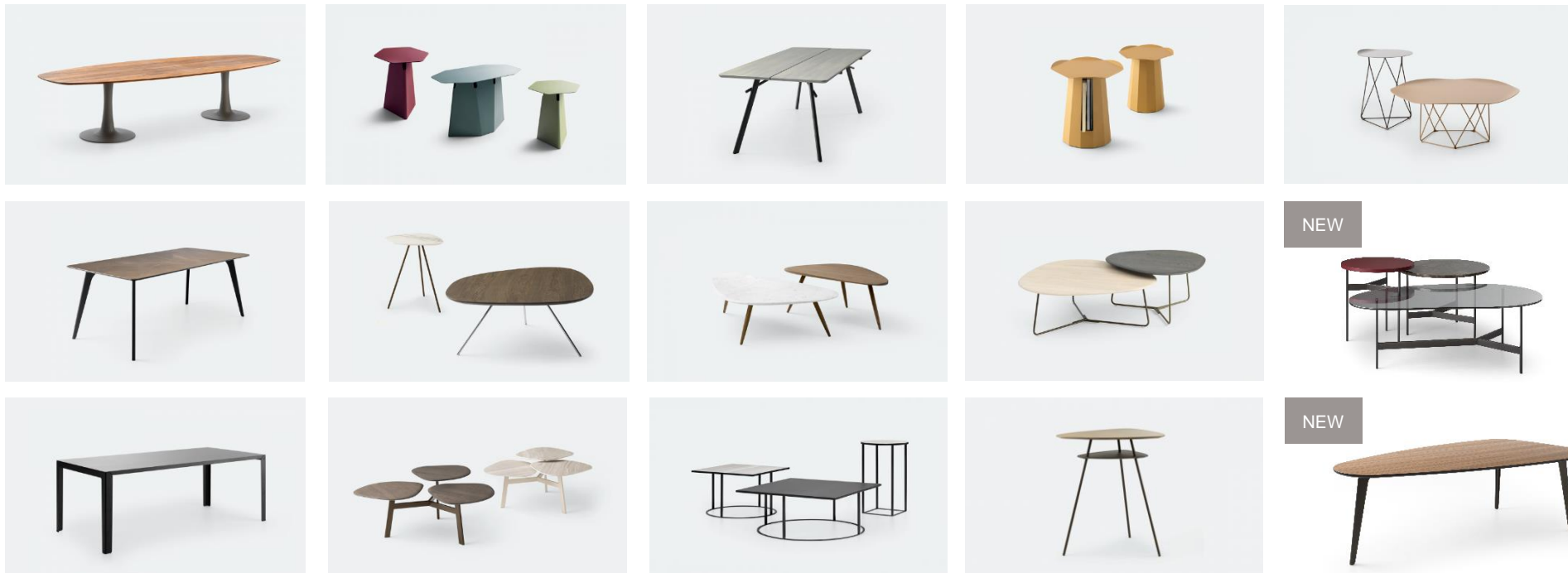
NEW



The Leolux LX collection includes

leolux LX

Tables



The Leolux LX collection includes

leolux LX

Benches & stools



LX319 / LX349

leolux LX





Reference –
Office Houten

LX319 / LX349

leolux LX



LX396

leolux LX



LX396

leolux LX



Reference –
City Hall, City of Venlo

LX673

leolux LX



LX673

leolux LX



Amazon HQ in Dublin by MJ Flood
Architect: HLW London

LX673

leolux LX



LX673

leolux LX



Residential project in the Netherlands
dealer: Van Waay, Zoetermeer

LX675

leolux LX



LX679

leolux LX



LX679

leolux LX



Reference – residential project
by Matser Wageningen (NL)

LX679

leolux LX



LX679

leolux LX



LX688

leolux LX





LX689

leolux LX

NEW



LX141

leolux LX



LX163

leolux LX



LX163

leolux LX



Reference – Scelta Institute Venlo



LX195

leolux LX



LX195

leolux LX



Reference – private appartments Lausanne by
Interhoff (Maarsse NL)

LX195

leolux LX



LX680

leolux LX



LX681

leolux LX

NEW



LXR02

leolux LX

NEW



LX320

leolux LX



LX320

leolux LX



LX389

leolux LX



LX389

leolux LX



Design: Thijs Smeets

LX389

leolux LX



Reference – Project basecamp Utrecht
Interior designer Shari Lee Gumps

LXR03

leolux LX



LX353

leolux LX





Reference –
Restaurant Chicago by
Mobili Domani

LX662

leolux LX



LX386

leolux LX



LX662

leolux LX





Reference –
Town Hall Waalre by Basburo



LX662

leolux LX



Reference –
Hotel Tirol, Ischgl
Architect Artis Plan AG

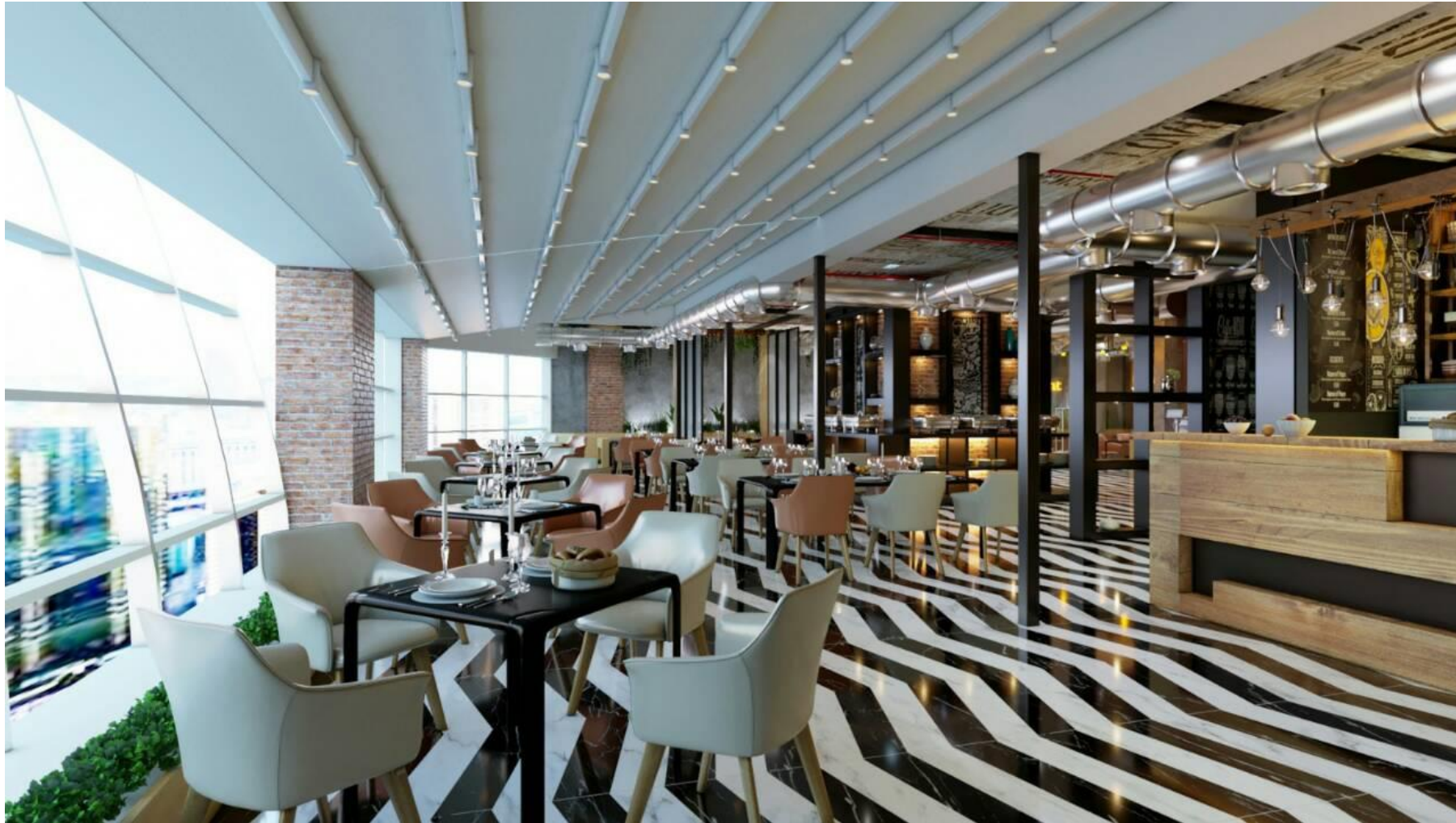


Reference –
Hotel Tirol, Ischgl
Architect Artis Plan AG

LX671

leolux LX





LX671

leolux LX



LX671

leolux LX



LX682

leolux LX



Design: Frans Schrofer, 2017

LX682 is a compact club chair that surrounds and supports your body. Beautifully finished on the back with the “Artisan” decorative stitch. The smart swivel base automatically returns to the start position when you leave the chair.



Reference –
Hotel Tirol Ischgl (AT) by
architect Artisplan



LX694

leolux LX



LX694

leolux LX



LX695

leolux LX



LX695

leolux LX



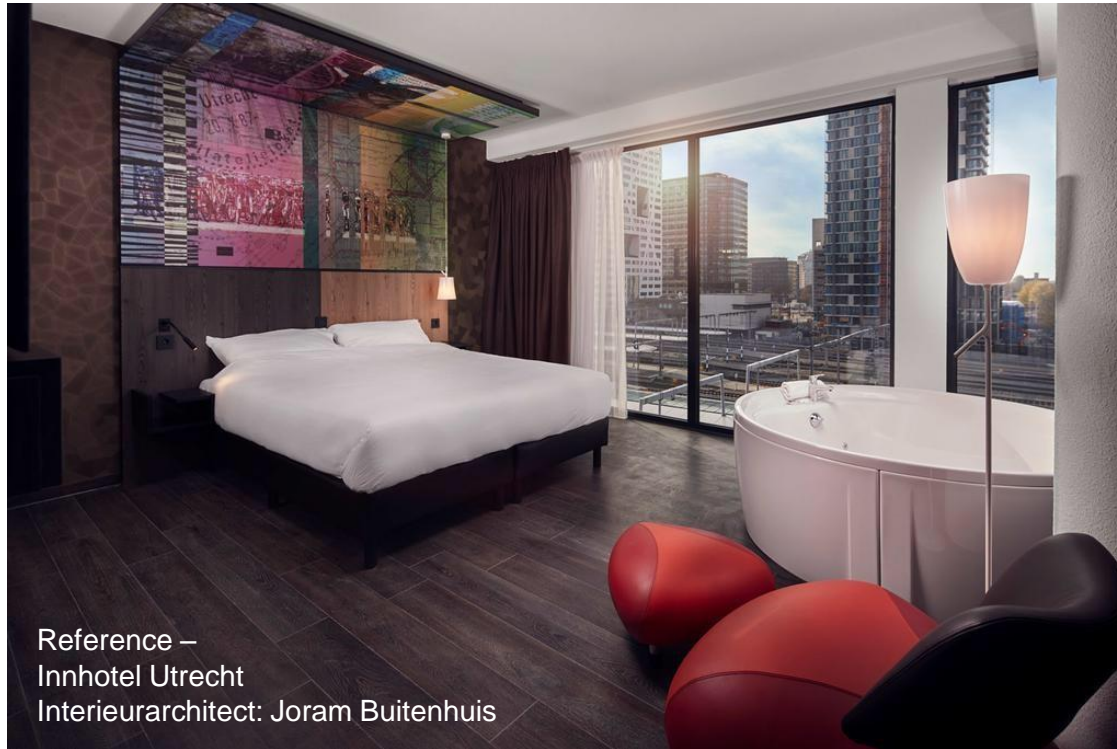
LX901

leolux LX



LX901

leolux LX





Reference –
Sweet Moments by
Shadows Design Doha



Reference –
Cruise ship Aidabella

LX965

leolux LX



Design: Gerard Vollenbrock, 1996

LX965

leolux LX



LX965

leolux LX



LX986

leolux LX



LX986

leolux LX



LX658 / LX659

leolux LX



LX685

leolux LX





Reference – project meeting rooms
De Manufactuur (NL)

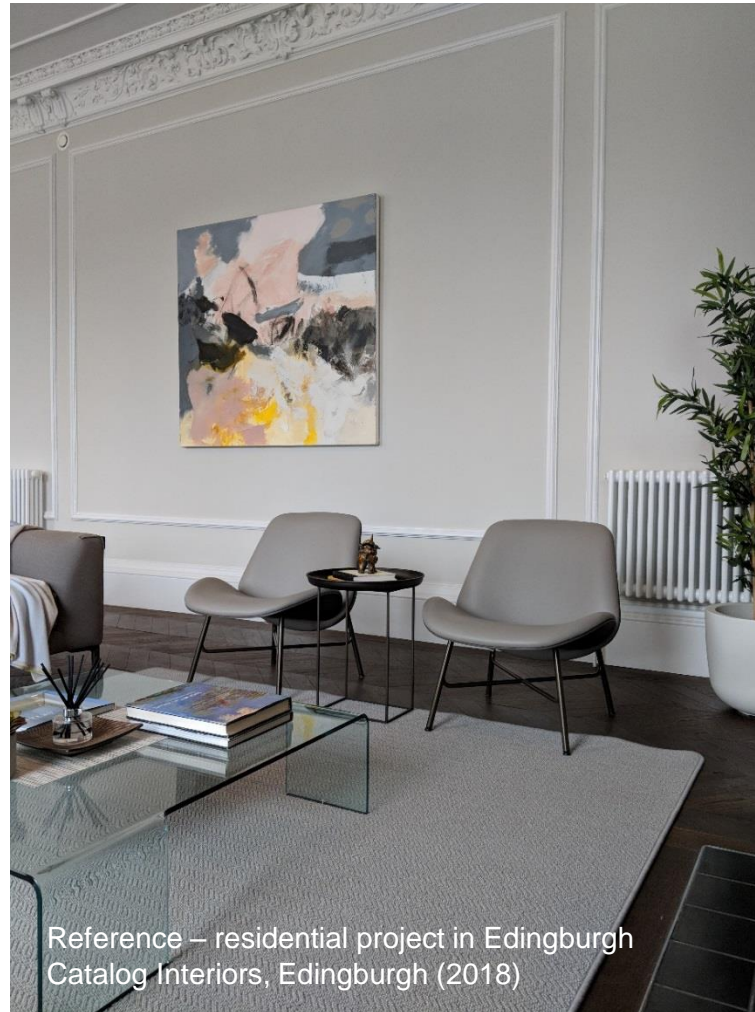
LX690

leolux LX



LX690

leolux LX



Reference – residential project in Edinburgh
Catalog Interiors, Edinburgh (2018)

LX690

leolux LX



Reference – loft in Venlo (NL)
Peters Interiors, Baarlo (2018)

LX699

leolux LX



LXT01

leolux LX



LXT02

leolux LX

NEW



Leolux Leather

If you opt for leather upholstery, Leolux LX presents three different options: Style, Avantgarde and Prestige. Three high-quality leathers, all of which have their specific characteristics in terms of appearance and feeling. And besides these three leather qualities, many other options are available on request, for example from the collections of Ohmann and ELMO.



elmoo®

leolux LX



Leolux Fabrics

Even if your project requires a beautiful, high-quality fabric upholstery, you can go all the way at Leolux LX. With our fabrics we do not use a standard collection, but we offer you a choice from the collections of renowned suppliers like Kvadrat, De Ploeg, ROHI, Oniro and Gabriel.



de ploeg: **ONIRO**
textiles **Gabriel®** **kvadrat**

leolux LX



Wood

A solid wooden table is a natural product. A table made from one piece of wood would crack. To avoid cracking, we construct the tabletop from slats of wood that are glued on all sides. This limits the shrinkage and expansion of the wood by humidity.

Wood veneer is a product with all the known characteristics of a natural product. No veneer table leaf is identical to another. Leolux endeavors to make the best selection out of the available raw materials. Slight deviations are unavoidable, but that is the charm of a natural wood product.



Lacquers

The Leolux lacquer collection is assembled with care by the color specialists at Leolux. The lacquers seamlessly match the colors in the Leolux fabric and leather collections.

Metal parts can be finished with an environmentally friendly epoxy powder coating.

Advanced lacquering techniques ensure that the colors can be used on different materials. So you can effortlessly make beautiful combinations.



Decorative stitching

Your furniture comes standard with a stitching in the color of your upholstery (colour to colour). As an option you can choose a contrasting seam on your furniture; a great way to accent special features in our designs. We have a selection of 24 colour.



Leolux Creator

All our options come together in the Leolux Creator: a detailed online configurator tool.

By simply selecting the desired configuration, upholstery and colors, a customized real-life image appears on the screen.

You can even zoom in and view the upholstery and other details in close-up from multiple positions.

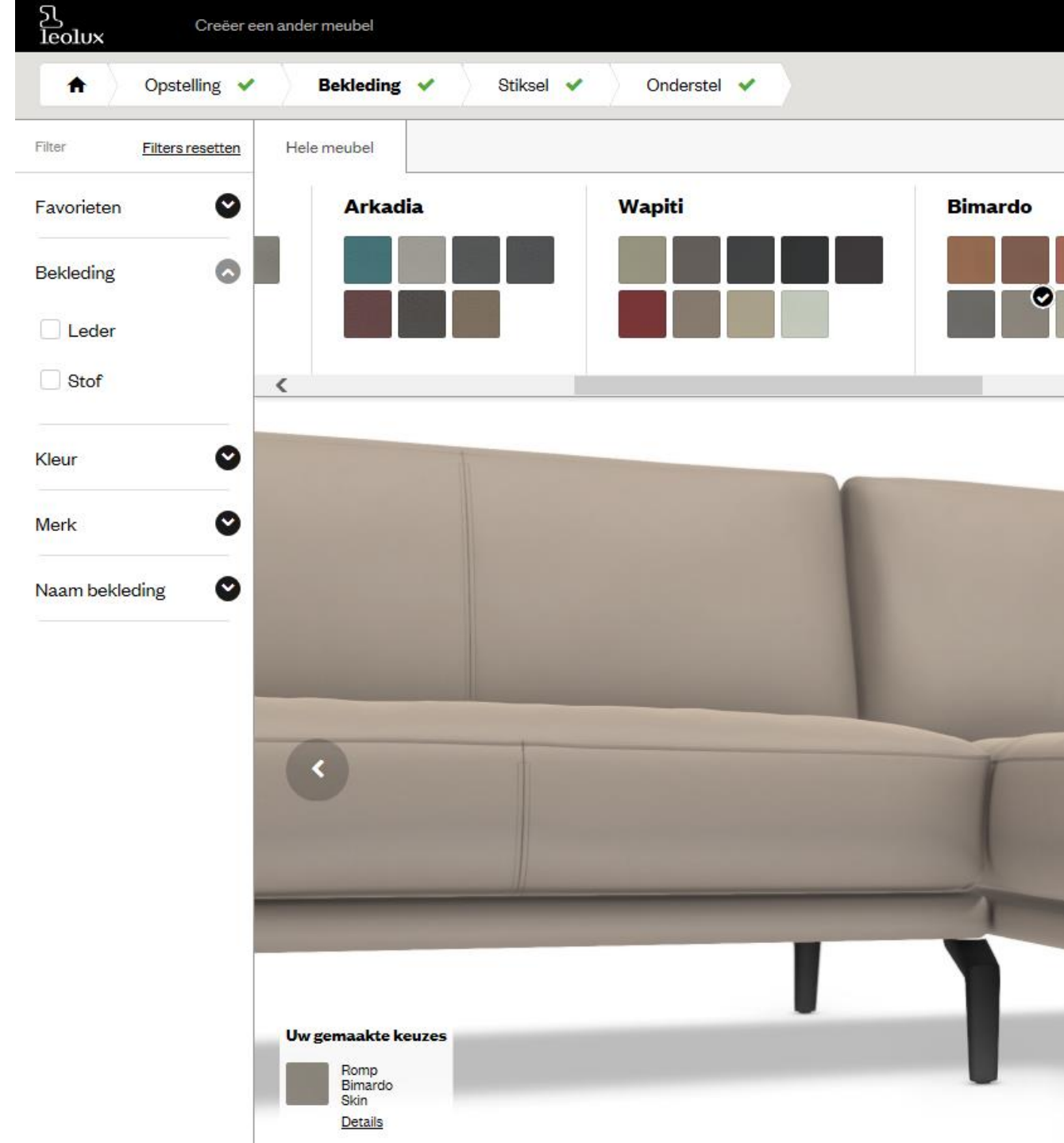


Image Database

Leolux has an online database, accessible via <https://www.leolux-lx.com/downloads>.

There is a variety of high resolution images available. You'll need a login and password. Simply make your own personal account and find the images you need, by choosing a category or choose a model directly.

Our image gallery also contains all 3D files from our products.

Leolux LX | Company Profile

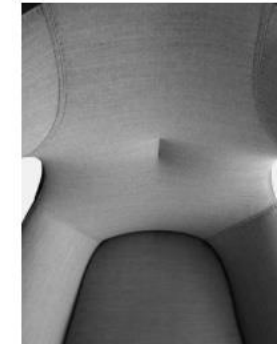
leolux LX

Products Downloads References About Contact

Downloads



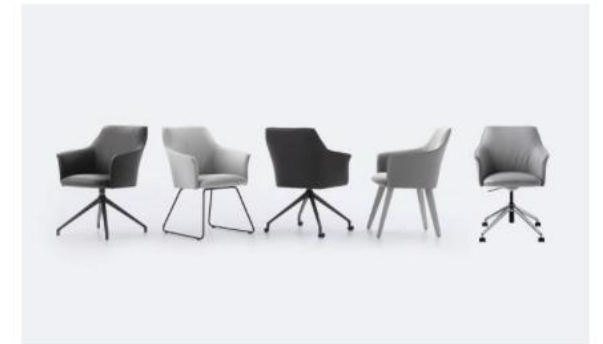
Images



2d



3d



Product info sheets

Products

Modular systems
Sofas
Armchairs
Chairs
Tables
Benches & Stools
New

Downloads

Professional portal

About Leolux LX

About
References
Designers
Materials

Contact

Contact
Sales Network
Design centers

Affiliated brands

Leolux
Pode

Leolux available in over 45 countries

leolux LX



Utrecht, The Netherlands



Eindhoven, The Netherlands



Krefeld, Germany



Brussels, Belgium



The inspiring world of Leolux can be discovered in the Leolux Design Centers, where we showcase the full collection and offer advice by Leolux specialists.

As a sneak preview, you can do a virtual tour in the Leolux Design Center in Brussels: leolux.viditour.nl/brussel/nl

Lean Manufacturing

Leolux continuously strives for efficiency in the production process:

- Minimum stocks
- Minimal indirect control
- Minimum buffers
- Maximum loading of trucks
- Optimal route planning
- Optimal batch size
- Maximum material efficiency



Design for a sustainable world

Leolux values sustainable relationships and a sustainable production process. We want to make beautiful products, with an eye for man and the environment, for ever new generations.

Examples of the sustainable Leolux production:

- 'Green' wood, leather and foam
- Environmentally friendly technologies
- Reducing energy consumption
- Reusing materials
- Responsible logistics
- Inventive use of heat
- Solar energy

Leolux LX | Company Profile



leolux LX

Thank you!

leolux LX

Contact

Phone: +31 (0)77 387 7222

E-Mail: info@leolux.com